

FOR SALE AND LEASE

144 COMMERCE DR.

GRAYSLAKE, IL 60030

15,500 Square Foot Office Building

Flexible Office Property for User Investment



GREAT ACCESS TO I-94 INTERCHANGE-COMPETITIVELY PRICED FOR SALE OR LEASE

PRIVATE OUTSIDE ENTRANCES, SEPARATE WASHROOMS, SERVICE DOORS AND AMPLE PARKING

The approximately 9,700 square foot unit at the rear of the building was a day care center with a large side entrance and 3,000 square foot rear yard playground.

The building was originally built for a 12-unit office facility and provides for maximum division flexibility. The former day care center can easily be subdivided for various size office tenants and the front is currently subdivided into four small units. It is ideal for a single owner user with expansion rental space availability.

For more information, please contact

Romeo Mura

Mobile: 847.858.9827

Email: Rmura@ccrofchicago.co

Gary Sloan

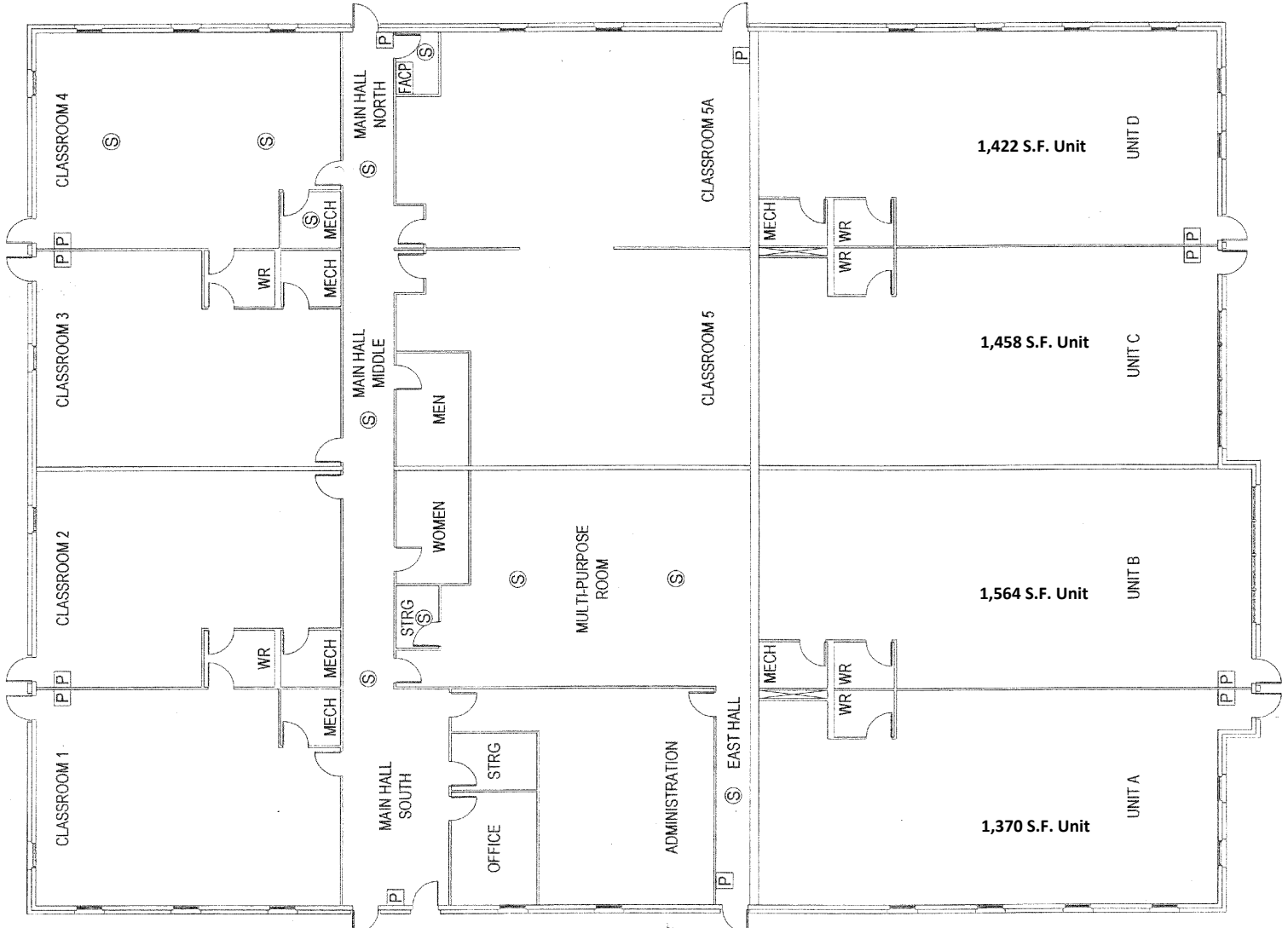
Mobile: 847.452.2463

Email: gsloan@ccrofchicago.com

Office: 2413 W. Algonquin Rd. * Suite 416 * Algonquin, IL 60102

All information herein is from sources deemed reliable and is submitted subject to errors omissions and to change of price or terms without notice.

15,500 square foot Divisible Owner/Investor Office Building



L

For more information, please contact

Romeo Mura

Mobile: 847.858.9827

Email: Rmura@ccrofchicago.com

Gary Sloan

Mobile: 947.452.2463

Email: gsloan@ccrofchicago.com

Combined Commercial Realty* 2413 W. Algonquin Rd. * Suite 416 * Algonquin, IL * 60102

All information herein is from sources deemed reliable and is submitted subject to errors, omissions and to change of price or terms without notice.